

# PROFESSIONAL SWATH GUIDANCE

SUNLIGHT READABLE  
COLOR ACTIVE MATRIX SCREEN



## SATLOC M3



SLX 300 SLX M3 SLX G3

Optional Touchscreen

Various Screen Sizes

View previous spray areas

Ruggedized modular design

WAAS compatible receiver



# POSITIONED FOR YOUR SUCCESS



PRECISION GPS APPLICATIONS

SATLOC

## GENERAL / PERFORMANCE SPECIFICATIONS

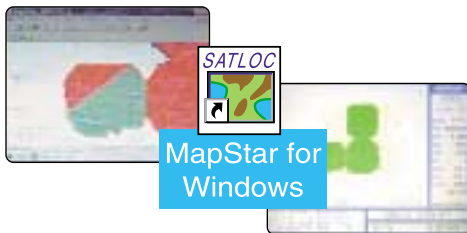
- Real time graphic swathing display capable of showing precise swath deposition, field boundaries, and mark points.
- Various mounting choices for easy installation
- "As applied" map when using Satloc Variable Rate Control software
- Job and spray/area recall
- Multi-function "Ruggedized" light bar for exterior mounting and "heads-up" visibility
- Remote Color Active Matrix Display
- Optional Resistive Touchscreen capability on display
- Automatic zoom and pan control when option selected
- Multiple field storage
- Log file replay feature: review of application work on the job and spray resume
- Real time display of acres in area and product applied
- System diagnostics and configuration display for DGPS
- NMEA output port for running other peripheral equipment
- Over 1000 hours of data logging storage for use with SATLOC Mapstar planning and analysis software
- Windows 98®

## SATLOC MAPSTAR SOFTWARE

- View log files for information on jobsite or in the office
- Mission Planning
- Create or edit Waypoints, Field Boundaries and Patterns
- Latitude and longitude positioning
- Area sprayed and chemical amounts applied
- Works with all Windows® compatible printers
- Import ESRI Shape, DXF and MID/MIF file formats
- Converts ESRI Shape, DXF and MID/MIF file formats to Satloc job files
- Export Satloc logs to ESRI Shape, DXF, MID/MIF or ASCII file formats
- SATLOC background map underlay
- Measure distance and area

## VEHICLE MOUNTING

- Ruggedized universal swivel RAM mount for 8.4" display
- ISO-mounted shock mount support for CPU module
- Remotely mounted CPU module for installation flexibility



## M3 COMPUTER GENERAL SPECIFICATIONS

|                        |   |
|------------------------|---|
| Processor type:        | Pentium class MMX, 233 MHz  |
| Memory:                | 64MB SDRAM standard   |
| Operating system:      | DOS*/Windows 98®  |
| Storage:               | 6.1 Gigabyte  |
| Storage (Removable):   | Single PCMCIA slot  |
| Display:               | 6.4" or 8.4" TFT active matrix color<br>Sunlight readable, low-glare screen<br>NEMA 4 sealed enclosure  |
| HiBrite:               | Technology with 8.4" screen   |
| Connections:           | Power, Lightbar, DGPS Receiver,<br>Keypad or keyboard/mouse<br>GPIO (swath advance, spray<br>on/off, aux.), COM1 RS-232 (full<br>handshaking), Display power, VGA |
| Size:                  | CPU: 9.375" x 6.5" x 4.1875"<br>Display: 2" x 9.5" x 7.625" (8.4)<br>Display: 2" x 13.5" x 8.875" (12.1)  |
| Weight::               | 6.9 pounds, CPU only  |
| Power:                 | Range 10-36 volts DC, reverse<br>polarity and over voltage protection   |
| Nominal Power:         | 38W to 55W (dependent on<br>display size)   |
| Operating Temperature: | System: -22°F to 140°F (-30°C to<br>+60°C) Display only: -4°F to<br>40°F (-20°C to +60°C)   |
| Housing:               | Tough extruded aluminum<br>construction<br>Dust proof, waterproof, shock<br>resistant, fully sealed   |

## SATLOC SLX and SLX300 RECEIVERS

- Compact size: 5"x5"x2" (SLXg) and 6"x5.5"x2.5" (SLX300)
- 4 diagnostics LED's
- 12 channel GPS engine
- 5Hz position update rate
- RS-232 interface
- Acquisition: first fix in <90 seconds (typical)
- NMEA 0183 output
- Omnistar, WAAS and/or beacon differential choices



OFFICIAL SATLOC DEALER



Avery label #05260 (laser print)

Telephone: (480)348-9919  
Fax: (480)348-6370  
15990 N. GREENWAY HAYDEN LOOP, SUITE 800  
SCOTTSDALE, AZ 85260

[www.satloc.com](http://www.satloc.com)